



DIRECCION DE TURISMO
RADA TILLY



diseño HAYES & RUBINA ideario@sinectis.com.ar

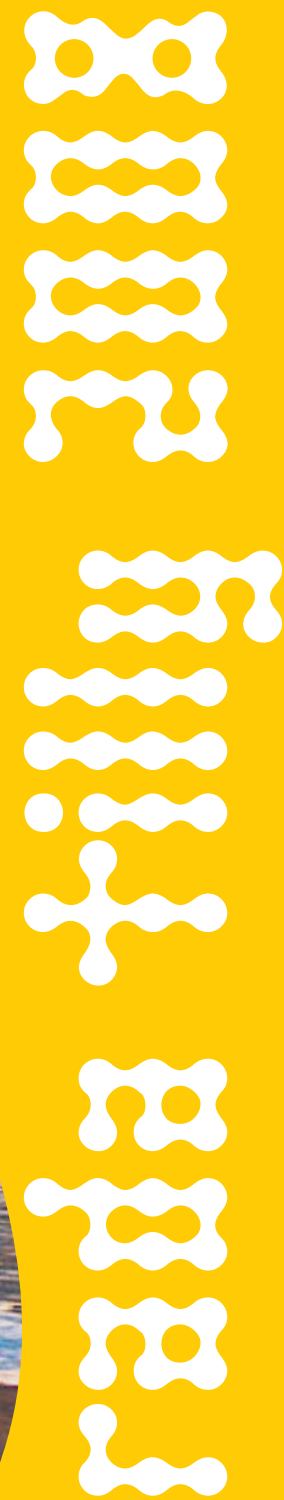
fotografía peppepugni

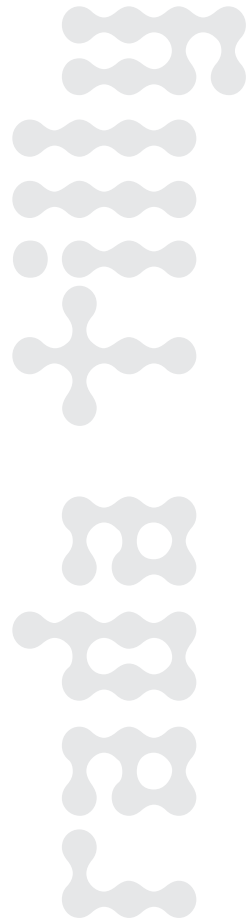


ARGENTINA 2008

Rada Tilly Patagonia

Candidate





RADA TILLY Patagonia Argentina

Rada Tilly 2008 - Candidate

1

PATAGONIA is a virtually unknown region of ARGENTINA, full of mystery. Its different points rise up and create great contrasts throughout an extensive virgin landscape.

The concept of beauty in PATAGONIA is materialized through a sunrise over a sea that rests on the beaches of sand or pebbles, or through the sunsets that settle over the plateaus of the high hills.

To appreciate this aspect of the region, one must be open to what is different: the colors are the result of a natural palette where the ochers prevail, combined with

greens and different colors of blue.

It is exotically simple, and the extensive open spaces reveal 180 degrees of landscapes which end with the limits of sight's vision.

Some visitors say that the sky is different, which offers a spectacle in itself. The wind, characteristic of the region, changes the color of the sky and the land with its presence.

Its beaches, reaching widths of up to 600 meters of solid ground, offer the possibility of practicing all types of sports.

The interminable extensions of land, the colors that go beyond the traditional definitions of beauty, the virginity of the landscapes, and the abundant varieties of flora and fauna, make PATAGONIA a place urging for adventure, which receives its visitors with the warm hospitality of the people who live there.

In the center of the Golf of Saint George, in the province of Chubut, the Villa Rada Tilly offers its beach to practice land yachting: an extensive stage for this sporting event which rests between the plateaus and the sea.



The PATAGONIAN LANDYACHTING ASSOCIATION (ASOCIACIÓN PATAGÓNICA DE CARROVELISMO) with its seat in Rada Tilly, the Province of Chubut, the Republic of Argentina is a non-profit organization. It is made up of a group of lovers of velocity and vertigo that decided to change the significance of an adverse climatic condition: the wind. The objective of the ASOCIACIÓN is to promote and spread the sport of Land Yachting in the Patagonian beaches and deserts, found in the south of the American Continent.

The beaches in the towns of Rada Tilly and Comodoro Rivadavia possess privileged geographic and climatic characteristics for the practice of this sport. Added to this is the quality service infrastructure found in both towns.

Both places have been evaluated by international landyachting representatives: Pascal Demuyser (Belgium) in 1987 and 2002, Nord Embroden (USA) in 2000, and Eric Engelbrecht (President of FISLY) in 2001. The observations were highly positive, which allowed for the ratification of the aptitude of these places for practicing this sport.

Local land yachting activity started in 1984, when the Comisión Promotora de Carrovelismo, antecedent of the current Association, was founded.

It is important to mention that landyachting has become one of the tourist resources of the region, due to the characteristics of its beaches and the wind.

It is the intention of this Association to hold the 11th Landyachting World Championship in February 2008.

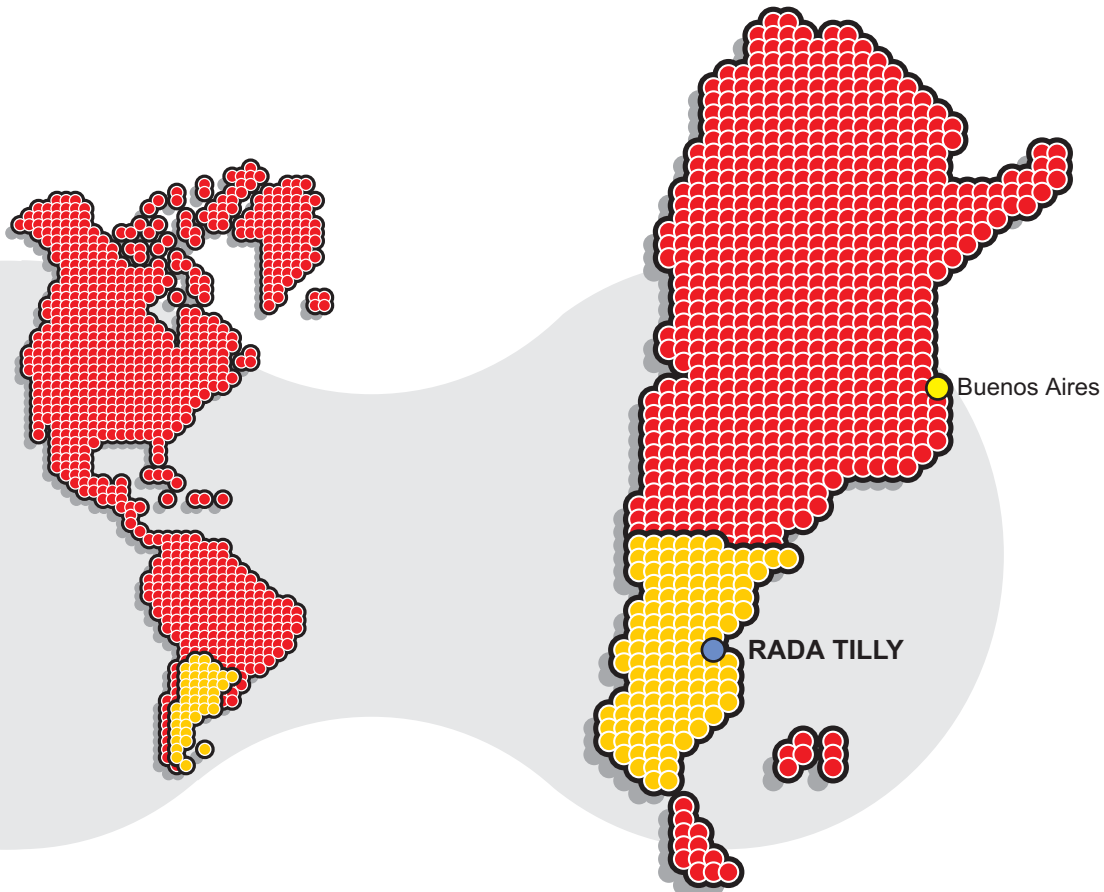
We believe that this proposal will far exceed expectations, due to the quality of the racing surfaces and due to the mystical charm of Patagonia, which naturally attracts tourism.

Institutional Background

Rada Tilly 2008 - Candidate

2





Geographical Location

Rada Tilly 2008 - Candidate

3

Distances

- Buenos Aires / Rada Tilly
1.800 km
- Rada Tilly / Comodoro Rivadavia
17 km





Comodoro Rivadavia was founded on February 23rd, 1901, with the objective of creating a port for shipping out the livestock production from the surrounding areas. However, the true impact of its development came on December 13th, 1907, with the discovery of petroleum. This event defined the town's social profile, which became known as the National Petroleum Capital.

Its population is a melting pot of cultures: Boers from South Africa, Portuguese, Germans, Bulgarians, Croatians, Yugoslavians, Spanish, Italians, Poles, and Chileans interact with the Argentine internal migration which concentrated, in the same town, families from the northern provinces of Catamarca, La Rioja, Santiago del Estero, Córdoba, and Tucuman, as well as others.

Several international companies set up in the town during the 1950s, which completed the town's link with petroleum exploitation activities. In the last few years, the economy has diversified, and has acquired greater importance in fishing activities, the generation of alternative energies, and the service industry.

Located 17 kilometers from the center of Comodoro Rivadavia, the Villa Rada Tilly connects the desert with the sea. Rada Tilly was an ancient marine post for English pirates and buccaneers. From the discovery of America until approximately 1810, they could control, strategically from the small bay, the movement of the Spanish Armada.

The Englishman Fitz Roy had already mentioned the place in his nautical papers. Sebastián Elcano, Simón de Alcazaba, Hernando de Magallanes, Rodrigo de Isla and Gamboa have also been said to have lived the sunsets and daybreaks of Rada Tilly.

The formal founding of the town dates to 1948; since that date, the sea, framed by unforgettable sunsets, has been a silent witness to the permanent growth of this town with its much concurred beach.

A Historical Summary of the Towns





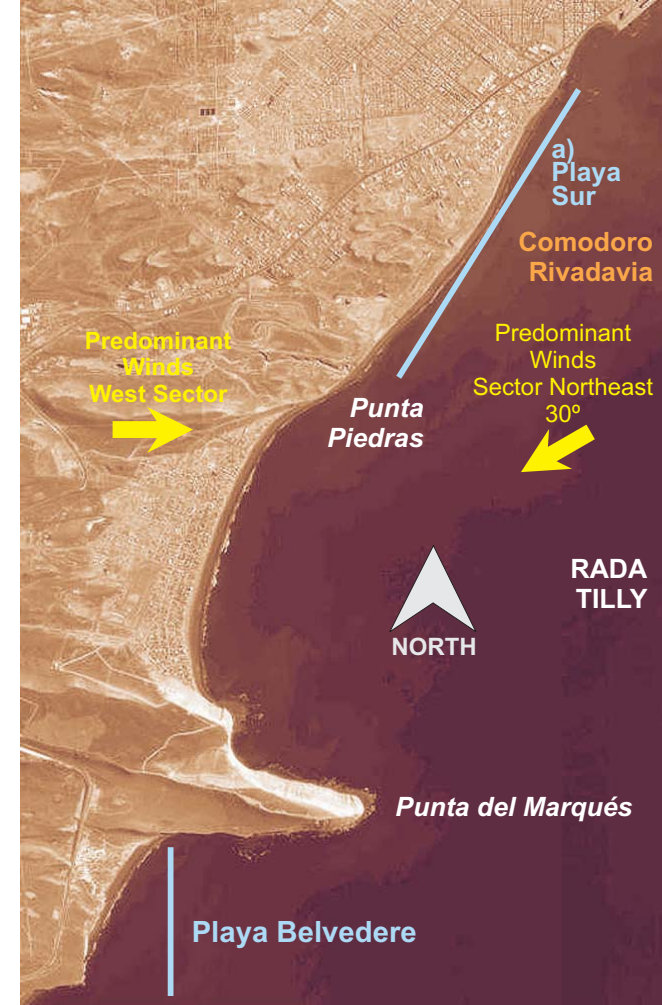
THE RADA TILLY BEACH

The beach of Rada Tilly is 3.5 kilometers long and between 400 and 500 meters wide at low tide. Along its entire coast, it has a smooth slope and highly compacted ground, which allows for perfect movement of the landyachts.

The terrain has a flat topographical characteristic, with an advantageous orientation of the beach transversal to the predominant direction of the wind. This allows for racing at high velocities.

The beachside Villa Rada Tilly has a stable population of 6,100. This number triples during the summer season.

The town is enveloped between two tall hills, extending into the sea, which give the town a very special physiognomy. It is located over the rada (a small bay) with the first row of homes looking over the coastal road. The town has a good commercial tourism infrastructure.



Characteristics of the circuits and racing surfaces for Landyachting

Although the wind is present all year, statistically, the windy season is between November and March-- from the middle of the spring until the beginning of autumn. Another particular characteristic is that it can vary several times during the day, obliging the competitors to change their previously elaborated navigation strategies.

The predominant wind in the region comes from the west, with a historical frequency of 43% and mean velocity of 41 kilometers/hour.

This continental wind is very irregular, with gusts between 60 and 80 kilometers/hour, which add that "seasoning" of vertigo and adrenaline to the sport.

Another dominant wind comes from the northeastern sector, with a frequency of 14%. In contrast with the continental wind, this wind comes from the sea with a mean velocity of 25 kilometers/hour. It tends to blow at 40 kilometers/hour, constant and sustained, which allows for safely developing high controlled velocities for land yachting.

The winds from the northwest appear with a frequency similar to the winds from the northeast, with constant velocities and the same conditions. The competitions held with winds from either of these directions, are technical, where the pilot must use his skill and dexterity. The wind from the west is apt for high velocity competitions.

Characteristics of the wind

THE BEACHES OF COMODORO RIVADAVIA

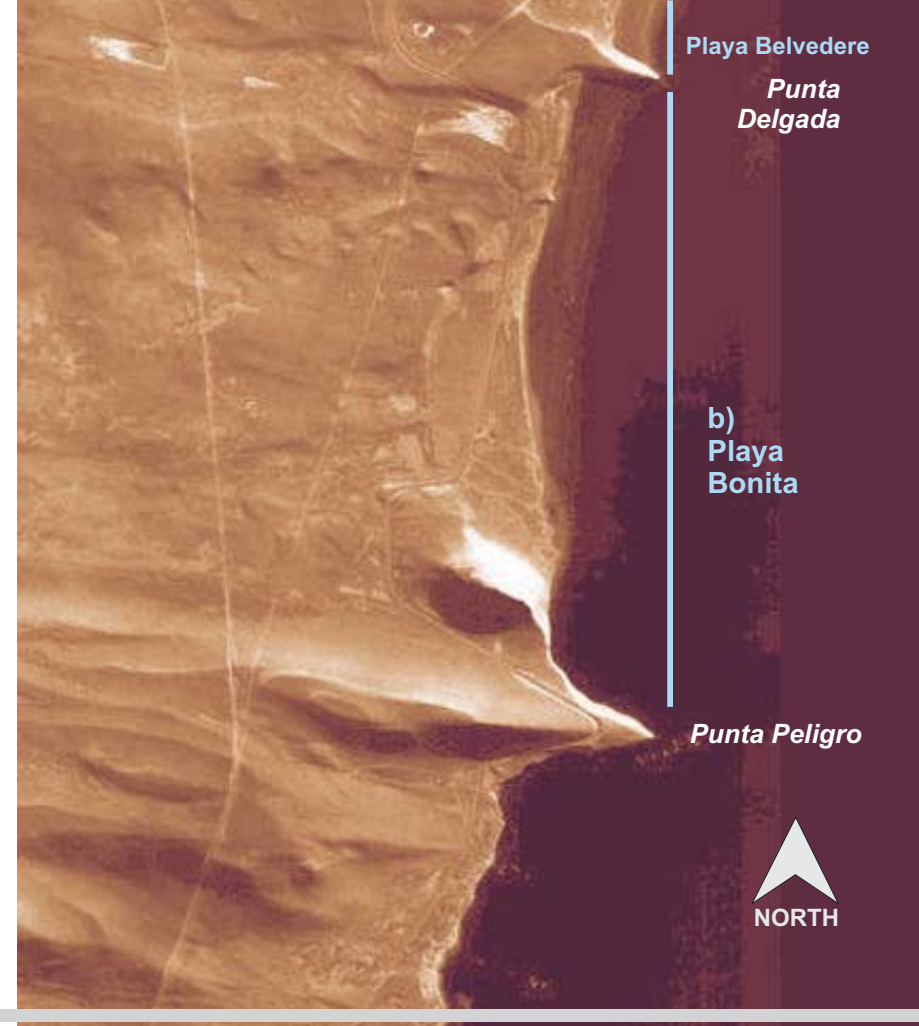
Comodoro Rivadavia is a city of 150,000 inhabitants, and also has beaches apt for land yachting. There are two especially recommended for sports activities:

a) Playa Sur (The Southern Beach)

This is the continuation of the beach of Rada Tilly; from Punta Piedras, in the northern part of the Rada Tilly, until reaching the Industrial Park, located to the south of Comodoro Rivadavia. The navigable length is 8 kilometers, and you can take advantage of its continuity with Rada Tilly, which makes a total length of approximately 12 kilometers.

La physiognomy of the ground tends to change after every cycle of tides and its characteristics vary from hard, compact, and flat to rough and soft. For this reason, the pilots must use their driving techniques and knowledge of the circuits to achieve an optimum competitive efficiency.

This type of beach is similar to those used in Europe in International Events and is the "most requested" by the sportsmen and women since it demands a competition of absolute skill.

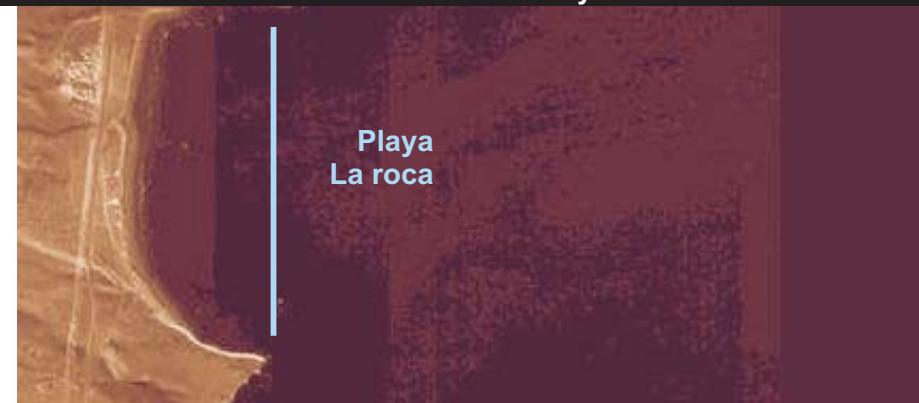


Characteristics of the circuits and racing surfaces for Landyachting

b) Playa Bonita (The Pretty Beach)

Located 12 kilometers to the south of Rada Tilly, on the border with the province of Santa Cruz, it is the widest beach in the region: more than 600 meters at low tide and 4 kilometers of useable length.

Its characteristics are similar to those of Playa Sur; a terrain that varies from hard and compacted to flat, rough, and soft. This beach has no service infrastructure only a tourist stop with food and bathrooms and a road police station belonging to the police of the province of Santa Cruz.



Institutional support for the 2008 World Championship

Comodoro Convention & Visitors Bureau

A non-profit organization, created by the Municipality of Comodoro Rivadavia through the Secretary of Culture and Tourism, which brings together institutions, travel agencies, organizers of congresses, airline companies, hotels, gastronomical companies, and others indirectly linked to the activity.

This institution supports this project for the 11th Landyachting World Championship in Rada Tilly with all of its infrastructure and available means.

Municipalities of Rada Tilly and Comodoro Rivadavia

Municipal Resolution of Rada Tilly N° 0508 / 02, January 21st, 2002

Municipal Resolution of Comodoro Rivadavia N° 0008 / 02, January 10th, 2002

The mayors of both municipalities met to prepare a resolution which confirms their cities' interest in supporting, together, the current project. This resolution assures continuity from now until 2008, regardless of governmental changes in the meantime.

Secretary of Tourism of the Province of Chubut

Resolution N° 005-OPT/02 declaration of Provincial Tourism Interest

The Secretary of Tourism and Protected Areas resolved, with the date of January 22nd, 2002, to support the initiative of the proposal for holding the 11th Landyachting World Championship in Rada Tilly.

Secretary of Tourism and Sports of the Nation Presidency of the Argentine Nation

The maximum national authority in sports declared its support, recognizing the event of National Interest, with the signature of the President of the Argentine Nation, upon receiving the confirmation of being sponsors of the World Championship.

Health Infrastructure

Comodoro Rivadavia is the most important city in Patagonia, and has health services for high complexity situations as well as a center to derive patients to the different specialized medical areas.

Current capacity and human resources

a) Public health:

State-run hospital with 180 beds and 8 for high-complexity situations

- 70 medical professionals in all of the specializations
- A high complexity biochemical laboratory
- Conventional radiology
- Computerized Mammography and Tomography
- A polyvalent intensive therapy unit
- Neonatal intensive therapy unit
- 180 registered nurses with university titles
- General surgery, Neurosurgery, orthopedic and traumatologic
- vascular surgery, Pediatric, reconstructive, laparoscopic surgery

b) Specialized Attention Health Centers

- Cancer treatment centers
- Cobalt bomb and Linear accelerator (currently being installed)
- Gamma chamber
- Equipment for surface and deep radiotherapy
- Private Institutions
- 5 private clinics
- 230 beds
- 220 medical professionals in all of the specializations
- Polyvalent intensive therapy
- Neonatal therapy with servocribs
- Computerized Tomography
- Gamma Spect chamber
- Doppler ecography
- mammography
- hemodinamy
- High complexity cardiology center, Catheterism, Angioplasty and endovascular surgery
- Hemodialysis Center
- Center for Litisias and renal treatments
- Specialized odontology
- Ophthalmic surgery

Health Infrastructure

Rada Tilly 2008 - Candidate

7

c) Private Institutions

- 5 private clinics
- 230 beds
- 220 medical professionals in all of the specializations
- Polyvalent intensive therapy
- Neonatal therapy with servocribs
- computerized Tomography
- Gamma Spect chamber
- Doppler ecography
- mammography
- Hemodinamy
- high complexity cardiology center, Catheterism, Angioplasty and endovascular surgery
- Hemodialysis Center
- center for Litisias and renal treatments
- Specialized odontology
- Ophthalmic surgery



Comodoro Rivadavia is a city which, in spite of being far from any other important urban center, has developed culturally and socially to have a concentration of culinary pleasures and recreational activities.

The restaurants offer great variety in their gastronomical offerings: from pizza and pastas to elaborate dishes with regional products, Argentine barbecues, and seafood. One can also enjoy international cooking. The city also has cafes and bars located throughout the city that allow the visitor to enjoy different landscapes and seascapes at the end of each day. In these places, one can practice one of the most cherished cultural activities of the Argentines getting together with friends.

Authorized casinos distributed throughout Comodoro Rivadavia and Rada Tilly, as well as Movie Theaters and Dancing Clubs, allow for a pleasant evening on the town. In terms of lodging capacity, two new large hotels have been opened in the past few years, which responds to the market demands. Comodoro Rivadavia is an obligatory stop while traveling through Patagonia, which also concentrates a great deal of business activities related to the petroleum industry and business in general. The lodging capacity between the two cities of Rada Tilly and Comodoro Rivadavia is currently 2500 beds.

The city understands that tourism is an important source of economic resources and has dedicated itself toward developing more tourist services. The material result of this effort is that it can now offer itself as the center for events of world-level importance.

In the case that the visitor wishes to remain in the city to continue on with a tour of Patagonia, the car rental agencies and airlines and bus lines are prepared to meet the needs of each particular case, offering an excellent service.

Infrastructure of Lodging, Gastronomy, and Recreation



Air Transport

International Airport General Enrique Mosconi

Comodoro Rivadavia is the home of the International Airport General Enrique Mosconi, 11 kilometers from the city's center. Flights arrive from every part of the country, including Buenos Aires and connections with the most important cities in Argentina.

All 8 national airline companies operate from the airport, as well as receiving international flights from Chile.

Flying Club "13 de Diciembre"

Along the same road that connects Rada Tilly with Comodoro Rivadavia, National Route N° 3, one finds the Flying Club "13 de Diciembre", where tourists can obtain special flights, in planes that are exclusively for regional flights, as well as helicopters, and arrive directly to different points in Patagonia.

Land Transport

Municipal Bus Station

Comodoro Rivadavia has its Bus Station in the heart of the city.

Here, buses arrive from every point of the country, traveling over well-maintained national roads, and which is the contact point for special Patagonian tourist centers like the Glacier Perito Moreno, the Caves of the Painted Hands, and the Petrified Forest.

All of the more than 18 national transport companies operate here.

Car Rental Companies

The most well-known international car rental companies, as well as the most prestigious national firms, operate in Comodoro Rivadavia, with good rates and options. All of them have on-line internet connections for inquiries or reservations, allowing the foreign tourist better access before his arrival. Some of the many companies to choose from include Avis, Hertz, Anie Millet, Full-Car, Windland, Dubrovnik, Aonik'enk, Viper, Apolo, and Localiza.

Trucking Companies

With connections to every point of the country, Comodoro Rivadavia has a network of Trucking Companies that permit the movement of Containers which arrive to the sea ports of cities like Buenos Aires, Bahía Blanca, Puerto Madryn, Puerto Deseado, Mar del Plata, etc, as part of the logistics option for an international event.

Maritime Transport

Comodoro Rivadavia has an important commercial maritime port which permits the arrival of container ships with competition materials from any part of the world.

The petroleum industry uses the port to receive equipment which arrives from the United States, Europe, and Asia.

Close by, you can find the terminals for loading crude oil into ships, which take the petroleum extracted from the regional oil basin to the refineries.

Infrastructure of Air, Land, and Sea Transport

INTERNET

These are some of the official sites which offer information to the tourist and visitor.

www.carrovelismo.com.ar

www.radatilly.gov.ar

www.comodoro.gov.ar

www.chubut.gov.ar

www.chubutur.gov.ar



1) Sarmiento The charm of the millenary PETRIFIED FOREST (150 km to the west)

The town of Sarmiento was founded as an agricultural colony in 1897. A group of immigrants and locals turned the place into a rich valley of irrigated land and fruit production. It also has a geobotanical park where one can find primitive species of the current family of conifers, dating back 75 million years.

The volcanic ashes from the upper cretaceous period present abundant trunks. Some of are considerable size and have transmuted their organic material into rock.

This reserve is visited by thousands of tourists every year who arrive from every corner of the planet to be able to see the different geological strata.

The trip goes along the route of the bi-ocean corridor (connecting the Atlantic with the Pacific), going through the Patagonian meseta, which combines with a charming landscape of hillsides of red, orange, and brown clay.

2) Puerto Madryn Peace and tranquility in excellent BEACHES (436 km to the north)

A combination of meseta and sea, allows you to discover the area from different perspectives: mountain biking, sand boarding in the sandbanks, and diving to see the wealth of marine fauna. Puerto Madryn is a place where one can live unforeseen emotions, like when, in the sea, the dolphins come close to the boats to show

their stunts and acrobatics.

Puerto Madryn is also home of the fabulous EcoCentro: a building of 1800 m2 which is the first space dedicated to understanding and interpreting the marine ecosystems. It is located in the vicinity of the city and very close to Peninsula Valdés, one of the places with the greatest concentrations of marine fauna along the Argentine coast.

3) Puerto Pirámides WHALES and contact with marine nature (546 km to the north)

A small town which dates back to 1900 when it was a salt port. Only vestiges remain of the original homes of adobe, metal, and wood.

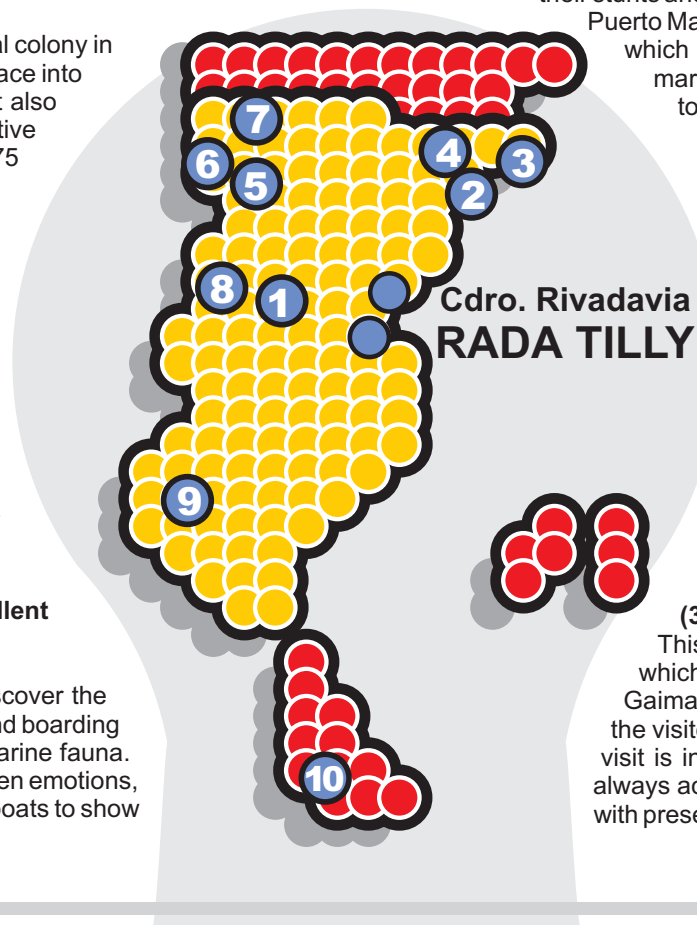
Puerto Pirámides has grown, in particular due to its tourist attraction of close-up sight-seeing of the Southern Right Whale. The whales can be seen from May to December, although they are more abundant during the months of September and October.

600 of their species arrive each year to the quiet waters of the Nuevo and San José gulfs.

4) Gaiman savoring a typical WELSH TEA (394 km to the north)

This is a town admired for the Welsh style architecture of its homes, which combine brick and rock many which were built during the 1800s.

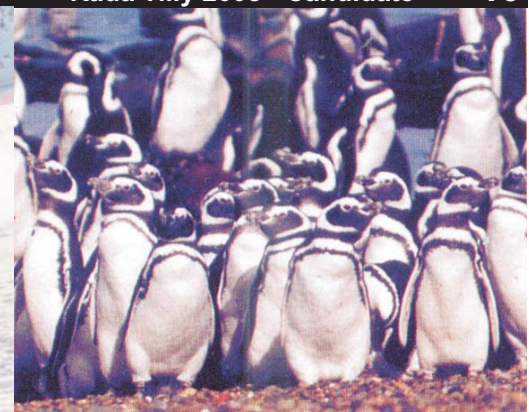
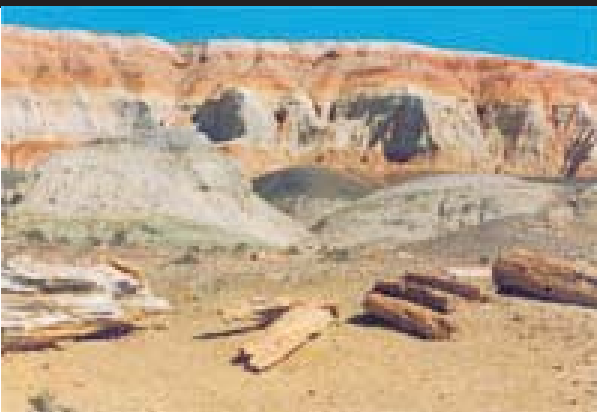
Gaiman is a mixture of beauty and enigma which captures the interest of the visitor as he/she discovers the town's treasures. The high point of the visit is in one of the many houses which offer "Welsh Tea": a true treat, always accompanied with traditional pastries, including typical cakes made with preserves and homemade butter.



Regional Tourism

Rada Tilly 2008 - Candidate

10



**5) Esquel Paradise of SNOW and MOUNTAINS
(596 km to the southwest)**

Located in the heart of the region of the Andes Mountain range, it offers surprises to the traveler any part of the year.

Fast rivers, millenary trees, large lakes and imposing mountains are the luxurious framework for activities like horseback riding, trekking, rafting, skiing, mountain climbing, or simply sitting quietly and waiting for the sunset.

The Winter Sports Center of La Hoya is located 13 kilometers from Esquel, and offers 24 ski slopes, with a surface area of 150 hectares and 9 modern elevators.

**6) Trevelin WELSH Magic
(621km to the southwest)**

With a start at the end of the 19th century with the arrival of the Welsh immigrants who wished to progress in freedom. Today, it is famous for its typical Welsh black cake and the hospitality of its people. It is located 23 kilometers to the south of Esquel and is an obligatory stopping point to cross over into Chile through the Futaleufú border post. Hills and immense open areas bathed in an infinity of colors create the sensation of looking at a painting.

**7) El Maitén NATIVE MOUNTAIN AREA
(723 Km to the southwest)**

With a pleasant microclimate along the rough Chubut River. Its name comes from the leafy evergreen trees which are located along the edges of the river and which offered shelter to the travelers. Currently, it is one of the points of attraction of the "La Trochita" train, which transports the tourists to magical and faraway periods of the mythical Patagonia. Also, in the Cañadon de los Ensueños, one finds a marvelous forest of different

varieties of trees which allow you to walk through them while concentrating on your own thoughts and illusions.

**8) Río Mayo RURAL TURISM
(274 Km to the west)**

Located close to the mountain area, after passing by the town of Sarmiento. Here, you can see the raising of guanacos, whose wool of very fine and high quality is used as a precious fiber in the manufacture of garments of the highest quality.

One also has the opportunity to enjoy the challenge of river fishing.

**9) El Calafate - THE PERITO MORENO GLACIER
(1040 km to the southwest)**

A city characterized by the intense green of its variety of trees that form a singular contrast with the landscape of low houses.

This small city is close to the Los Glaciares National Park, where 600,000 hectares house some of the most fascinating natural wonders in the world. Imposing glaciers offer a moving spectacle, and two large lakes, Argentino and Viedma, complete the incomparable landscape which receive the tongues of ice which come down from the heights. To be able to contemplate the Perito Moreno glacier, with its whiteness and harmony, justifies, in itself, a trip to Patagonia. Easy to arrive with an air connection from Comodoro Rivadavia, allowing the visitor to enjoy one of the most marvelous places in Argentina.

**10) USHUAIA The end of the WORLD
(1600 km to the south)**

A trip that will undoubtedly allow you to enjoy a true natural paradise. With direct access from Comodoro Rivadavia in daily flights that connect you with Tierra del Fuego in less than 2 hours.

Regional Tourism

